



PARC
DYFFRYN
POWERING A GREENER FUTURE



CENIN IS A BRIDGEND-BASED, RENEWABLE INTEGRATED INFRASTRUCTURE COMPANY, COMMITTED TO POWERING A GREENER FUTURE.



We are committed to sustainable development as a trusted environmental partner, creating valued, renewable-sourced, efficient infrastructure solutions delivered with passion, expertise, teamwork, and a relentless focus on wellbeing for the next generation.

Our renewable energy business cluster at Parc Stormy incorporates wind and solar generation, anaerobic digestion, ultra-low carbon cement

production and an example of an energy positive building in SOLCER House, developed with Cardiff University.

Through our innovative approach to renewable energy provision, we unlock hidden green energy potential and utilise the earth's natural resources.

We respect the people we work with and the places they live, helping develop quality energy systems for local communities that increase wellbeing and add value for future generations by creating a sustainable world.

In 2021, our work in sustainable development was recognised with CENIN being awarded the Queen's Award for Enterprise.



MARTYN POPHAM
DIRECTOR



NEIL TAPPER
DIRECTOR - ENGINEERING



KATHERINE DAY
FINANCIAL CONTROLLER



JESS KING
PROJECT COORDINATOR



REUBEN HAMON
PROJECT DESIGNER



PAUL KELLIHER
LEGAL CONTRACTS &
ADMINISTRATION MANAGER



JOANNE GODDARD
COMMUNITY LIAISON &
EDUCATION LEAD



THE QUEEN'S AWARDS
FOR ENTERPRISE
SUSTAINABLE
DEVELOPMENT
2021



PARC
DYFFRYN
POWERING A GREENER FUTURE



MEET TENANT FARMER, ARWYN PRICHARD, WHOSE FAMILY HAVE FARMED THE LAND AT VIANSHILL FARM FOR OVER 60 YEARS...



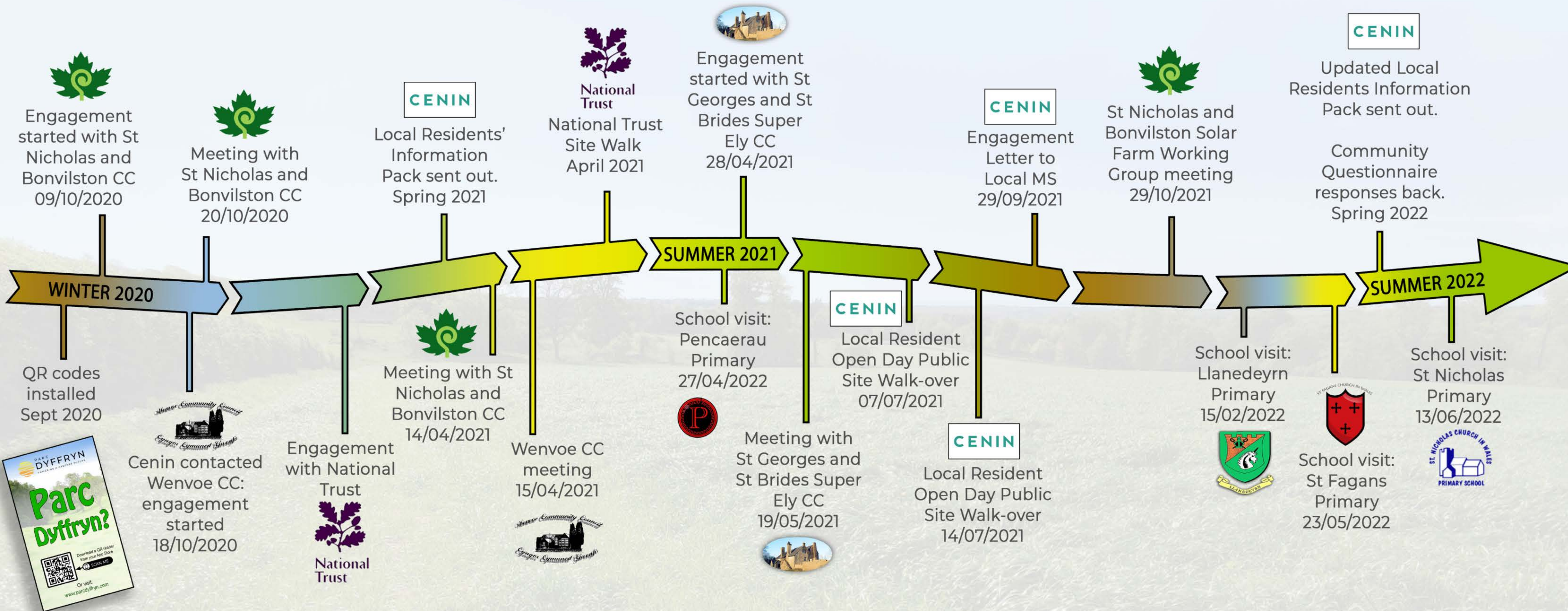
"I am pleased to be working with Martyn Popham and the CENIN team to deliver this innovative renewable energy project. By working with CENIN and the Coedarhydglyn Estate (the landlords) this project offers me the opportunity to change my farming system and my lifestyle.

Livestock farming is hard work and long hours, often for little financial reward and this farm sitting on an outcrop of limestone has become harder and harder to manage as there is very little soil covering the limestone, which results in the grass burning off in the summer and then needing to buy in extra feedstuffs for my livestock.

This innovative project will make a significant amount of locally produced renewable energy, it will allow sheep to graze under the panels and give much greater access to the countryside on land that is susceptible to climate change.

Most of all it allows me choices, and greater financial security that I wouldn't have if it didn't go ahead."

PARC DYFFRYN COMMUNITY ENGAGEMENT TIMELINE



Future Plans

We are proposing a 2m wide permeable path, from the A48 bus stop to Dyffryn House. The path will be accessible to walkers, cyclists, and those with limited mobility.



EXAMPLE OF SURFACED PATH

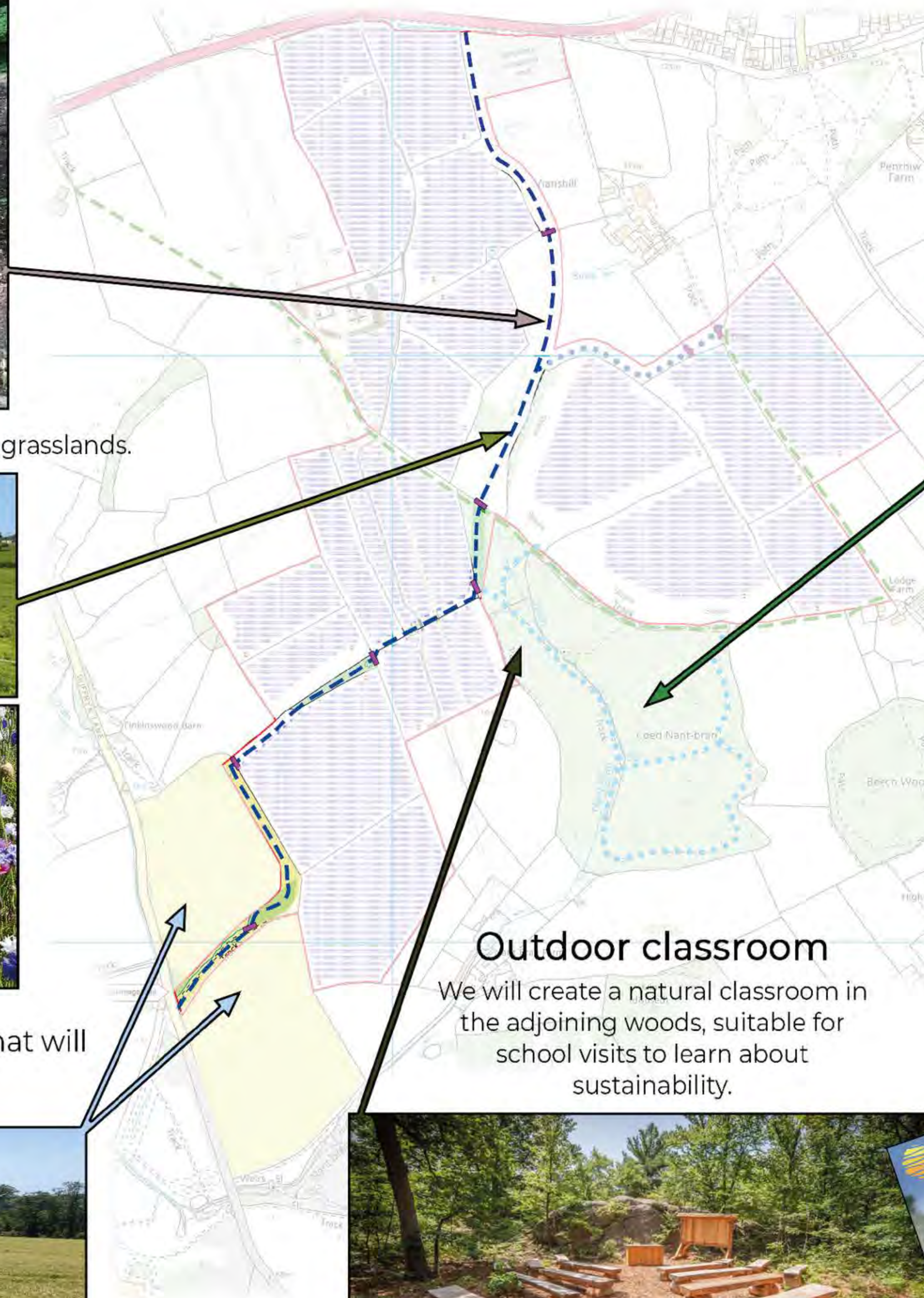
We will enhance the biodiversity of the trees, hedgerows and grasslands.



CENIN has secured fields adjoining Dyffryn House that will protect the landscape surrounding Dyffryn House.

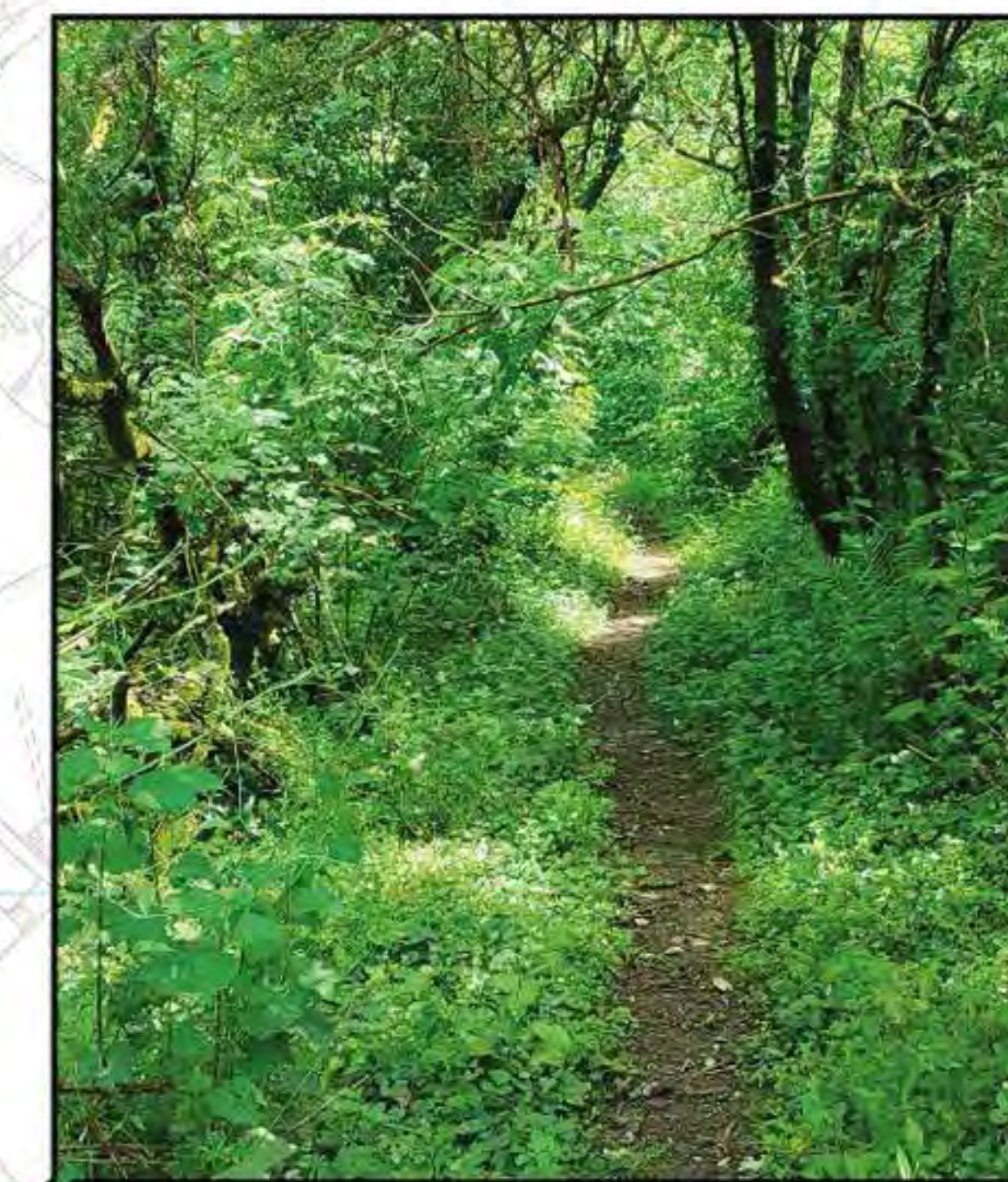


ENHANCING ACCESS TO THE LOCAL AREA



Woodland Paths

A significant amount of new paths will be created in the woodland. Existing paths will be extended.



Outdoor classroom

We will create a natural classroom in the adjoining woods, suitable for school visits to learn about sustainability.



EXAMPLE OF OUTDOOR CLASSROOM

Education

Nature Trail - a series of QR codes have been dotted around Parc Dyffryn as educational points with up-to-date information on renewable energy, agriculture and biodiversity.



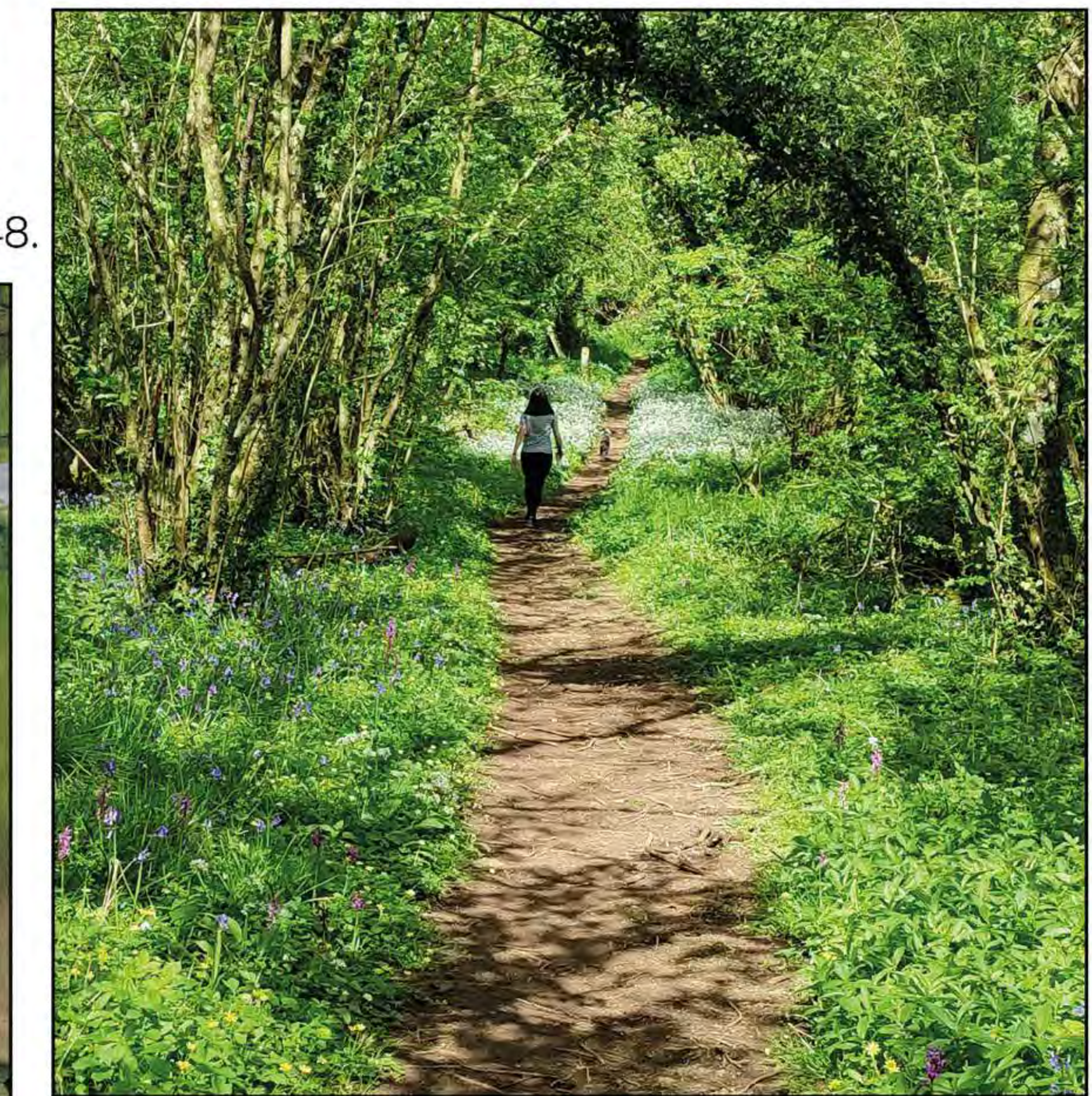
WHY IS SOLAR PV SUITABLE HERE?

1. The land is highly susceptible to climate change which makes the land difficult to farm. Poor ground and shallow soil depth cause drying out, cracking and burn off.

2. By creating shade under the solar panels, the ground won't dry out and sheep can still be grazed.

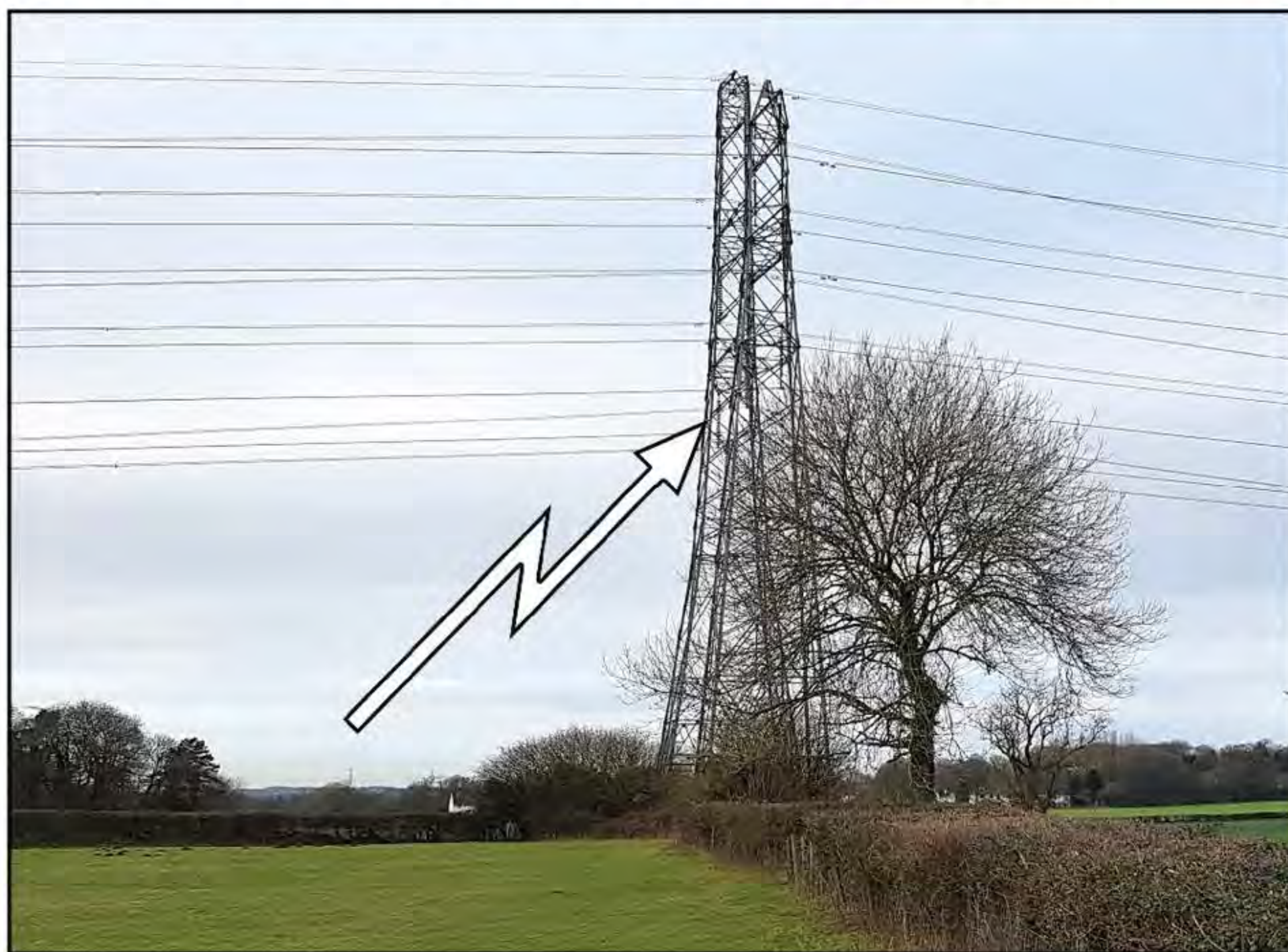


5. Local benefits: CENIN will create miles of new paths, improve existing paths, and increase biodiversity on site.



3. There is a suitable grid connection on site.

4. The site compound is brownfield land accessible from the A48.





DO YOU HAVE A QUESTION FOR THE PARC DYFFRYN TEAM?

Throughout the planning process we have always welcomed open dialogue with the local community, to ensure all our plans have been properly consulted on.

Should you wish to ask us a question about the project or seek further clarification about anything in this exhibition you can submit a question to us via the link on our website.

Alternatively, you can contact:

Damian Barry - Director
damian.barry@rpsgroup.com
029 2066 8662



Jess King - Projects Coordinator
jessk@cenin.co.uk
01656 760 550

